

## WELCOME TO THE PICTURE HOUSE



The Picture House is a single screen cinema built in 1921 and seating over 500, showing mainstream, art-house, family, classic and foreign language films and broadcasting live theatre, music, opera and ballet on to the big screen. We're open every evening, weekend afternoons, Thursday mornings and for matinees during the school holidays.

We have a kiosk and bar serving hot, cold and alcoholic drinks, sweet and savoury snacks, ice creams, cakes and popcorn – cash only please. Please do not bring your own food and drink into the cinema.

## ACCESSIBILITY

We are wheelchair accessible; access is via a ramp to the right hand (park) side of the building, using a RADAR key or calling 01422 842807 to alert a staff member to gain admission. An accessible toilet is located in the foyer (accessed via the auditorium). We have 4 wheelchair spaces within the seating area on sloping floor and 6 level floor wheelchair spaces at the rear of the stalls.

For the hearing impaired we have headsets to give amplification and we aim to screen at least one film a week with subtitles on screen (subject to availability). For the visually impaired audio description is offered through audio headsets. Subtitled screenings and audio described films are listed overleaf with S/T and A/D.

## LOCATION & PARKING



We're located in the centre of town on the A646 (Halifax to Burnley road) close to many bus stops and 5 minutes' walk from the railway station.

There is no customer parking at the cinema, but on street parking is available nearby and the town has many pay and display car parks. We have one disabled parking space which customers may use when it is available.

## ENTRY PRICES

### FILMS (no advance booking, pay on the door)

Adults (26 years up to State Pension Age)	£7.50
Seniors (State Pension Age) / P/L Card Holders	£6.50
Young Person (3 – 25 years) / Full Time Students	£5.50
Babies / Toddlers (0 – 2 years)	Free

**Family Matinee** (early afternoon - everyone) £5.50  
**Eleven's / Parent & Baby Screening** (everyone) £6.50

Picture This Members enjoy a £1 discount on the above prices (except Family Matinee Film price)

### LIVE ARTS (advance booking recommended)

Adults (26 years up to State Pension Age)	£17/£15
Seniors (State Pension Age) / P/L Card Holders	£15/£13
Young People (3 – 25 years) / Full Time Students	£13/£11

Picture This Members enjoy a £2 discount on the above Prices. Live Arts prices may vary.

## PURCHASING TICKETS

**FILMS:** Cinema tickets are sold at the time of the screening only (unless stated otherwise). We accept cash and debit card payments at the Box Office (we do not accept credit cards). We accept HBPH gift vouchers at the Box Office.

**LIVE ARTS:** Advance tickets for live arts events can be bought:  
 (i) In person at our Box Office (cash / debit card) for events in the next three months.  
 (ii) using Ticketsource, our booking agent, online at [www.ticketsource.co.uk/hbpicturehouse](http://www.ticketsource.co.uk/hbpicturehouse)  
 (iii) via the Ticketsource box office tel. 0333 666 3366 (open 9pm-7pm weekdays, 9am-5pm Saturday) for a fee of £1.75 including postage of paper tickets. A fee of 7.5% of the ticket price applies to all TicketSource bookings.

**BOX OFFICE OPENING:** The Box Office opens 15 minutes before the film programme (adverts & trailers) published start time. For live arts the Box Office opens 1 hour before the event starts. The Box Office closes 30 minutes after a film / live event starts.

**Please note the cinema kiosk accepts cash/debit card payments**

Hebden Bridge Picture House  
[www.hbph.co.uk](http://www.hbph.co.uk)  
 New Road, Hebden Bridge, HX7 8AD  
 T: 01422 842807 (cinema opening hours only)  
 T: 01422 847287 (weekday mornings only)  
 E: [info@hebdenbridgepicturehouse.co.uk](mailto:info@hebdenbridgepicturehouse.co.uk)

Find and follow us online at Twitter @hbpicturehouse  
 Facebook at HebdenBridgePictureHouse and  
 Instagram at hbpicturehouse

# HEBDEN BRIDGE PICTURE HOUSE



27th Sep - 31st Oct 2019

## W/B FRI 27 SEPTEMBER

Fri 27	Downton Abbey (PG) <b>A/D</b>	7.45pm
Sat 28	The Lion King (PG) <b>A/D</b>	1.15pm
	Downton Abbey (PG) <b>A/D</b>	4.15pm
	<b>NT Live:</b> Fleabag (Encore) (15)	8.00pm*
Sun 29	The Lion King (PG) <b>A/D</b>	1.30pm
	Downton Abbey (PG) <b>A/D S/T</b>	4.30pm
	Hail Satan? (15)	7.45pm
Mon 30	Downton Abbey (PG) <b>A/D</b>	7.45pm
Tue 1	Downton Abbey (PG) <b>A/D</b>	7.45pm
Oct		
Wed 2	Downton Abbey (PG) <b>A/D</b>	7.45pm
Thu 3	Downton Abbey (PG) <b>A/D</b>	10.30am
	<b>Live Arts:</b> Wise Children (15)	7.30pm*

## W/B FRI 4 OCTOBER

Fri 4	Ad Astra (12A) <b>A/D</b>	7.45pm
Sat 5	UglyDolls (U)	1.30pm
	Neither Wolf Nor Dog (12A)	4.30pm
	Ad Astra (12A) <b>A/D</b>	7.45pm
Sun 6	UglyDolls (U)	1.30pm
	Ad Astra (12A) <b>A/D</b>	4.30pm
	Neither Wolf Nor Dog (12A)	7.45pm
Mon 7	Ad Astra (12A) <b>A/D S/T</b>	7.45pm
Tues 8	<b>Royal Opera:</b> Don Giovanni (Adv.12A)	6.45pm*
Wed 9	Ad Astra (12A) <b>A/D</b>	7.45pm
Thu 10	Ad Astra (12A) <b>A/D</b> <b>Billy Connolly:</b> The Sex Life of Bandages (18)	10.30am 8.00pm*

Films start approximately 30 mins after the programme (adverts & trailers) start time shown above. \*Live Arts/special events/film actual start time is shown - doors open 45 or 60 minutes prior. \*\*Autism Friendly / relaxed screenings have no adverts & trailers. Time shown is film start time and doors open 45 mins prior. A/D and S/T explained overleaf.

## KEY TO ICONS

**WEEKDAY ELEVEN'S** All tickets for Eleven's (programme starts 10.30am, film at 11am) are just £6.50 and include a free tea or coffee and a biscuit. Please note no discounts are available on tickets for these screenings (except for Picture This members). Doors open at 10.15am.

**PARENT & BABY SCREENING** With the lights turned up a little (and the sound down a notch), we create a stress-free environment **exclusively** for parents/guardians to enjoy films with their babies (aged under 12 months). Tickets are just £6.50 and include a free tea/coffee (travel mugs welcome for babies' safety) or glass of squash. Sign up to our free Parent & Baby mailing list for monthly listings, news and updates via [www.hebdenbridgepicturehouse.co.uk/parent-and-baby](http://www.hebdenbridgepicturehouse.co.uk/parent-and-baby)

**F-RATED FILMS** Developed by Bath Film Festival and now expanding across the UK, the F-Rating is a new film rating which highlights films made by and featuring women. Discover which films pass the F-Rated test and explore the female writers, directors and actors leading change in the industry: find out more at [f-rated.org](http://f-rated.org)

**AUDIO DESCRIBED FILMS** All films with Audio Description via headphones are signified by the logo above and **A/D** on the listings page. Details of these films are often limited at time of print, so please check our website for more details as they are announced.

**SUBTITLED FILMS** All screenings with subtitles projected onto the screen for the hearing impaired, are signified by the logo above or **S/T** on the listings page and occur at least once a week where possible. Please note all other screenings of these films are without subtitles on screen.

**AUTISM FRIENDLY** Our occasional Autism Friendly / relaxed screenings create a sensory friendly and inclusive environment. Adjustments at the cinema reduce over-stimulation and create a welcoming place for people with autism (and anyone who would benefit from the adjustments) to enjoy films with their families, friends or carers. Please note there are no adverts or trailers before these screenings. Entry £5.50 for everyone. Time shown is film start time.

## FIND AND FOLLOW US ONLINE



## W/B FRI 11 OCTOBER

Fri 11	The Goldfinch (15) <b>A/D</b>	7.30pm
Sat 12	Astro Kid (PG)	1.30pm
	Honeyland (12A)	4.30pm
	The Goldfinch (15) <b>A/D</b>	7.30pm
Sun 13	Astro Kid (PG)	1.30pm
	The Goldfinch (15) <b>A/D</b>	4.00pm
	Inna De Yard (12A)	7.45pm
Mon 14	The Goldfinch (15) <b>A/D</b>	7.30pm
Tue 15	The Goldfinch (15) <b>A/D S/T</b>	7.30pm
Wed 16	The Goldfinch (15) <b>A/D</b>	7.30pm
Thu 17	The Goldfinch (15) <b>A/D</b> <b>National Theatre Live:</b> A Midsummer Night's Dream (Adv.12A)	10.30am 7.00pm*

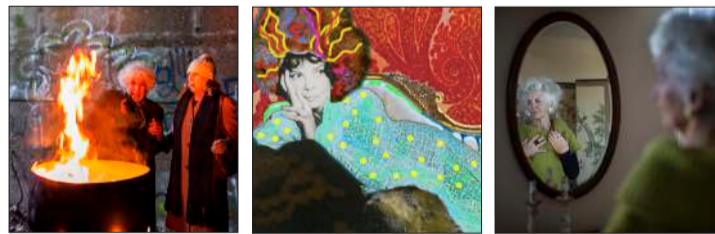
## W/B FRI 18 OCTOBER

Fri 18	Judy (12A) <b>A/D</b>	7.45pm
Sat 19	The Art of Racing in the Rain (PG) <b>A/D</b> The Farewell (PG) Judy (12A) <b>A/D</b>	1.30pm 4.30pm 7.45pm
Sun 20	The Art of Racing in the Rain (PG) <b>A/D</b> Judy (12A) <b>A/D</b> The Farewell (PG)	1.30pm 4.30pm 7.45pm

**UNDER 26S ENTRY ONLY £5.50!**

## SUPPORT US

### THE BEST OF: WOMEN OVER FIFTY FILM FESTIVAL (CERT TBC) Sun 27th October at 4.30pm (films at 5pm, ends at 7pm)



Women Over Fifty Film Festival (WOFFF) runs from Sept 20th - 22nd 2019 at Lewes Depot and champions and showcases the work of older women on screen and behind the camera with an annual short film festival and year-round events and film screenings.

This year, Hebden Bridge Picture House is pleased to partner with WOFFF to deliver you the Best of the Fest showcasing 13 short films. Visit [hbph.co.uk](http://hbph.co.uk) for the full list of short films, and event information - usual cinema prices apply.

## ADVERTISING & SPONSORSHIP

AT HEBDEN BRIDGE PICTURE HOUSE

Encompassing onscreen, print and online advertising, Hebden Bridge Picture House offers a cost effective opportunity for your business to be seen by a captive and engaged audience.

### Prices start from £100. Our advertisers benefit from:

- Exposure to a captive audience
- The goodwill associated with supporting a community organisation
- Competitive prices
- High programme retention & email open rate

For further information please email [marketing@hebdenbridgepicturehouse.co.uk](mailto:marketing@hebdenbridgepicturehouse.co.uk)



## LIVE ARTS

Enjoy a Live Arts broadcast with content received direct by satellite from The National Theatre, The Royal Opera and Royal Ballet at the Royal Opera House and the Royal Shakespeare Company amongst others. Visit [hbph.co.uk](http://hbph.co.uk) for information. Please consider purchasing advance tickets online to avoid queues at the Box Office. Details overleaf.

### ROYAL BALLET: CONCERTO / ENIGMA VARIATIONS / RAYMONDA ACT III (ADV.12A)

Tues 5th Nov at 7.15pm (doors 6.15pm)  
 Tickets priced £17/£15/£13



Petipa's Raymonda Act III is Russian classical ballet summarized in one act, full of sparkle and precise technique, while Ashton's Enigma Variations is quintessentially British in every way – from its score by Elgar and period designs by Julia Trevelyan Oman, to Ashton's signature style, the essence of British ballet.

### NATIONAL THEATRE LIVE: HANSARD (ADV.12A)

Thu 7th Nov at 7pm (doors 6pm)  
 Tickets priced £17/£15/£13



See Olivier Award-winners, Lindsay Duncan (Birdman, About Time) and Alex Jennings (The Lady in the Van, The Queen), in this brand new play from Simon Wood, broadcast live from the National Theatre in London.

### 42ND STREET: THE MUSICAL (ADV.12A)

Sun 10th Nov 4.30pm (doors 3.30pm)  
 Tickets priced £17/£15/£13



The largest ever production of the Tony Award-winning Broadway musical theatre spectacular. Filmed live at the magnificent Theatre Royal, Drury Lane in London's West End in 2018. A tap-dancing, show-stopping extravaganza!

### ROYAL SHAKESPEARE CO. LIVE: TIMON OF ATHENS (ADV.12A)

Thurs 21st Nov at 7pm (doors 6pm)  
 Tickets priced £17/£15/£13



Timon has it all – money, influence, friends. But when the money runs out, Timon soon finds her influence and friends have also gone. Featuring a "searing central performance" (Guardian) from award-winning actor, Kathryn Hunter, Timon of Athens is a glittering and biting satire on whether money truly buys happiness.

## WEEK BEGINNING FRI 27 SEPTEMBER

### DOWNTON ABBEY (PG)

Fri 27th September to Thurs 3rd October

Dir: Michael Engler | UK | 2019 | 122 mins

Cast: Hugh Bonneville, Elizabeth McGovern, Maggie Smith, Laura Carmichael, Michelle Dockery, Joanne Froggatt, Brendan Coyle



The television series Downton Abbey followed the lives of the Crawley family and the servants who worked for them at the turn of the 20th century in an Edwardian English country house. Over its 6 seasons, the series garnered 3 Golden Globe Awards, 15 Primetime Emmy Awards, 69 Emmy nominations in total, making Downton Abbey the most nominated non-US television show in the history of the Emmys - even earning a Special BAFTA award and a Guinness World Record for the highest critically rated TV show along the way.

### THE LION KING (PG)

Sat 28th & Sun 29th September

Dir: Jon Favreau | US | 2019 | 118 mins

Cast: Donald Glover, Seth Rogen, Chiwetel Ejiofor, Alfre Woodard, John Oliver, Beyoncé Knowles-Carter

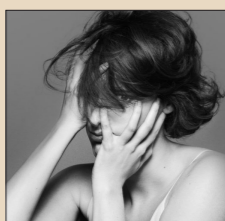


Disney's The Lion King features pioneering filmmaking techniques, welcoming back to the big screen iconic characters that audiences have long treasured—but in a whole new way. Simba idolizes his father, King Mufasa, and takes to heart his own royal destiny. But not everyone in the kingdom celebrates the new cub's arrival. Scar, Mufasa's brother—and former heir to the throne—has plans of his own. The battle for Pride Rock is ravaged with betrayal, tragedy and drama, ultimately resulting in Simba's exile. With help from a curious pair of newfound friends, Simba will have to figure out how to grow up and take back what is rightfully his.

### NT LIVE: FLEABAG (ENCORE) (15)

Sat 28th September

See the hilarious, award-winning, one-woman show that inspired the BBC's hit TV series Fleabag, recorded live at London's West End on 12 September. Written and performed by Phoebe Waller-Bridge (Fleabag, Killing Eve) and directed by Vicky Jones, Fleabag is a rip-roaring look at some sort of woman living her sort of life. Book early to avoid disappointment. Details of how to purchase tickets in advance are on the back page of this brochure.



### HAIL SATAN? (15)

Sun 29th September

Dir: Penny Lane | US | 2019 | 94 mins | Documentary

Chronicling the extraordinary rise of one of the most colourful and controversial religious movements in American history, Hail Satan? is an inspiring and entertaining new feature documentary from acclaimed director Penny Lane (Nuts!, Our Nixon). When media-savvy members of the Satanic Temple organize a series of public actions designed to advocate for religious freedom and challenge corrupt authority, they prove that with little more than a clever idea, a mischievous sense of humor, and a few rebellious friends, you can speak truth to power in some truly profound ways. As charming and funny as it is thought-provoking, Hail Satan? offers a timely look at a group of often misunderstood outsiders whose unwavering commitment to social and political justice has empowered thousands of people around the world.



### WISE CHILDREN (15)

Thurs 3rd October

Multi-award-winning director Emma Rice brings her unique, exuberantly impish vision to Angela Carter's great last novel in this brand-new theatre production. A big, bawdy tangle of theatrical joy and heartbreak, Wise Children is a celebration of show business, family, forgiveness and hope, with a generous dash of Shakespeare, scandal and mischief, taking the audience on a rollercoaster ride of emotion. Details of how to purchase tickets in advance are on the back page of this brochure.



## WEEK BEGINNING FRI 4 OCTOBER

### AD ASTRA (12A)

Fri 4th to Thurs 10th Oct (excl. Tues 8th)

Dir: James Gray | US | 2019 | 123 mins

Cast: Brad Pitt, Tommy Lee Jones, Ruth Negga, Donald Sutherland, Liv Ullmann



Years ago, astronaut Roy McBride's (Brad Pitt) father (Tommy Lee Jones) was lost while on a mission in space. Now, Roy's heading 'Ad Astra' – to the stars – to the outer edges of the solar system to find his missing father and unravel a mystery that threatens the survival of our planet. It's the biggest and riskiest journey of his life, but he needs to know what happened and why. Why did his father disappear, and why did his mission go so wrong? His journey will uncover secrets that challenge the nature of human existence and our place in the cosmos.

### UGLYDOLLS (U)

Sat 5th & Sun 6th October

Dir: Kelly Asbury | US | 2019 | 87 mins

Cast: Pitbull, Ice-T, Kelly Clarkson, Blake Shelton, Leehom Wang, Wanda Sykes



The much-loved global plush toy phenomenon UglyDolls hits the big screen with this fun-packed new animated musical adventure, featuring the acting and singing voices of a wonderful cast, including Kelly Clarkson, Nick Jonas, Janelle Monáe, Blake Shelton and Pitbull. Unconventionality rules at the film's warm-hearted core, as the ever-optimistic UglyDolls confront accepted notions of beauty.

### NEITHER WOLF NOR DOG (12A)

Sat 5th & Sun 6th October

Dir: Steven Lewis Simpson | UK/US | 2016 | 110 mins

Cast: Dave Bald Eagle, Christopher Sweeney, Richard Ray Whitman, Roseanne Supernault, Tatanka Means, Zahn McClarnon



Adapted from the acclaimed novel Neither Wolf Nor Dog by Kent Nerburn the story follows a white author who gets sucked into the heart of contemporary Native American life in the sparse lands of the Dakota's by a 95 year old Lakota elder and his side-kick. "By the time the end credits arrive, the characters of this modest, crowd-funded feature are practically unforgettable. It's immensely serious but no downer." Star Tribune

### ROYAL OPERA: DON GIOVANNI (ADV.12A) Tues 8th October

Kasper Holten's 2014 production for The Royal Opera casts Don Giovanni as an artist who thrives on an audience enticed by his creative gifts. The visually spectacular set by award-winning designer Es Devlin features ingenious video designs which provide an insight into the characters' thoughts and emotions. Don Giovanni is the second of Mozart's landmark collaborations with librettist Lorenzo da Ponte. In it they created a work that has beguiled and entranced in equal measure since its premiere in 1787. Perfectly situated, as no other opera, between tragedy and comedy, this potent drama combines glorious music with a seductive central character who is endlessly fascinating in his complexity. Advance tickets for this event are priced £17/£15/£13. Details of how to purchase tickets in advance are on the back page of this brochure.



### BILLY CONNOLLY: THE SEX LIFE OF BANDAGES (18) Thurs 10th October

Hailed as the UK's most influential comedian of all time, legendary Scot Billy Connolly is coming to cinemas with this brilliant show from his final stand-up tour. Recorded in 2015, during the Australian leg, this whip smart routine is a riotous journey filled with outrageous tales and blistering observations of everyday absurdities. Screening as a special one-night-only event, Connolly will also muse upon his career, life and legacy in a deeply personal interview filmed exclusively for cinema audiences. Advance tickets for this event are priced £15/£13/£11. Details of how to purchase tickets in advance are on the back page of this brochure.



## WEEK BEGINNING FRI 11 OCTOBER

### THE GOLDFINCH (15)

Fri 11th to Thurs 17th October

Dir: John Crowley | US | 2019 | 149 mins

Cast: Ansel Elgort, Finn Wolfhard, Sarah Paulson, Luke Wilson, Jeffrey Wright, Nicole Kidman



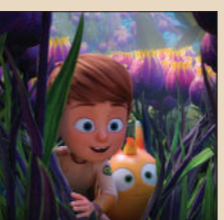
The Goldfinch is the film adaptation of Donna Tartt's globally acclaimed best-selling novel, which won the 2014 Pulitzer Prize for Fiction and the Andrew Carnegie Medal for Excellence in Fiction. Theodore "Theo" Decker was 13 years old when his mother was killed in a bombing at the Metropolitan Museum of Art. The tragedy changes the course of his life, sending him on a stirring odyssey of grief and guilt, reinvention and redemption, and even love. Through it all, he holds on to one tangible piece of hope from that terrible day...a painting of a tiny bird chained to its perch. The Goldfinch.

### ASTRO KID (PG)

Sat 12th & Sun 13th October

Dir: Eric Tosti | France | 2019 | 90 mins | English Voice

Cast: Landen Beattie, Jason Anthony



Following the destruction of their space-ship, ten-year-old Willy gets separated from his parents, while traveling through the galaxy. As his rescue capsule lands on a wild and unexplored planet, he befriends the friendly robot Buck and kooky alien Flash. Together they adventure through the wild and mysterious planet, discovering its wildlife and beauty but also the dangers that lie beneath!

### HONEYLAND (12A)

Sat 12th October

Dir: Tamara Kotevska, Ljubomir Stefanov | Republic of Macedonia | 2019 | Turkish/Macedonian with English subtitles | 87 mins | Documentary



In a deserted Macedonian village, Hatidze, a 50-something woman, trudges up a hillside to check her bee colonies nestled in the rocks. Serenading them with a secret chant, she gently maneuvers the honeycomb without netting or gloves. Back at her homestead, Hatidze tends to her handmade hives and her bedridden mother, occasionally heading to the capital to market her wares. One day, an itinerant family installs itself next door, and Hatidze's peaceful kingdom gives way to roaring engines, seven shrieking children, and 150 cows. Yet Hatidze welcomes the camaraderie, and she holds nothing back—not her tried-and-true beekeeping advice, not her affection, not her special brandy. But soon Hussein, the itinerant family's patriarch, makes a series of decisions that could destroy Hatidze's way of life forever.

### INNA DE YARD (12A)

Sun 13th October

Dir: Peter Webber | France | 2019 | 99 mins | Documentary



Joyous and vibrant, set against the lush green mountains of Jamaica, Inna de Yard sees a superstar group of reggae legends gather to record a new album of infectious hits in an unplugged style that harks back to their roots. The musicians include Ken Boothe, Winston McAnuff, Kiddus I, Cedric Myton and Judy Mowatt whose iconic songs capture the poetry and passion of their homeland.

### NATIONAL THEATRE LIVE: A MIDSUMMER NIGHT'S DREAM (ADV.12A) Thurs 17th October

Shakespeare's most famous romantic comedy will be captured live from the Bridge Theatre in London in summer 2019. Gwendoline Christie (Game of Thrones), Oliver Chris (Green Wing, NT Live: Young Marx), David Moorst (NT Live: Allelujah!) and Hamed Animashaun (The Barber Shop Chronicles) lead the cast as Titania, Oberon, Puck and Bottom. Advance tickets for this event are priced £17/£15/£13. Details of how to purchase tickets in advance are on the back page of this brochure.



## WEEK BEGINNING FRI 18 OCTOBER

### JUDY (12A)

Fri 18th to Thurs 24th October

Dir: Rupert Goold | UK/US | 2019 | 118 mins

Cast: Renée Zellweger, Jessie Buckley, Rufus Sewell, Michael Gambon, Bella Ramsey, Finn Wittrock

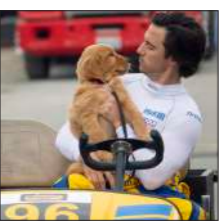


Winter 1968 and showbiz legend Judy Garland arrives in Swinging London to perform in a sell-out run at The Talk of the Town. It is 30 years since she shot to global stardom in The Wizard of Oz, but if her voice has weakened, its dramatic intensity has only grown. And yet Judy is fragile. After working for 45 of her 47 years, she is exhausted; haunted by memories of a childhood lost to Hollywood; gripped by a desire to be back home with her kids. Will she have the strength to go on? Featuring some of her best-known songs, including the timeless classic 'Over the Rainbow', Judy celebrates the voice, the capacity for love and the sheer pizzazz of "the world's greatest entertainer".

### THE ART OF RACING IN THE RAIN (PG)

Sat 19th & Sun 20th October

Dir: Simon Curtis | US | 2019 | 109 mins | Cast: Milo Ventimiglia, Amanda Seyfried, (Voice) Kevin Costner, Gary Cole, Kathy Baker, Ryan Kiera Armstrong



Based on the best-selling novel by Garth Stein, The Art of Racing in the Rain is a heartfelt tale narrated by a witty and philosophical dog named Enzo (voiced by Kevin Costner). Through his bond with his owner, Denny Swift (Milo Ventimiglia), an aspiring Formula One race car driver, Enzo has gained tremendous insight into the human condition and understands that the techniques needed on the racetrack can also be used to successfully navigate the journey of life. The film follows Denny and the loves of his life - his wife, Eve (Amanda Seyfried), their young daughter Zoe (Ryan Kiera Armstrong), and ultimately, his true best friend, Enzo.

### THE FAREWELL (PG)

Sat 19th, Sun 20th & Tues 22nd Oct

Dir: Lulu Wang | US | 2019 | 100 mins | Cast: Awkwafina, Tzi Ma, Diana Lin, Jim Liu, Shuzhen Zhou, Gil Perez-Abraham



In this funny, uplifting tale based on an actual lie, Chinese-born, U.S. raised Billi (Awkwafina) reluctantly returns to Changchun to find that, although the whole family knows their beloved matriarch, Nai-Nai, has been given mere weeks to live, everyone has decided not to tell Nai Nai herself. To assure her happiness, they gather under the joyful guise of an expedited wedding, uniting family members scattered among new homes abroad. As Billi navigates a minefield of family expectations and proprieties, she finds there's a lot to celebrate: a chance to rediscover the country she left as a child, her grandmother's wondrous spirit, and the ties that keep on binding even when so much goes unspoken.

### ROYAL OPERA: DON PASQUALE (ADV.12A) Thurs 24th October

Royal Opera favourite Bryn Terfel heads the cast for this new production of Donizetti's comedy of domestic drama across two generations. The witty story of a middle-aged man whose supposed young wife runs rings around him – with her own ulterior romantic purpose in mind. Advance tickets for this event are priced £17/£15/£13. Details of how to purchase tickets in advance are on the back page of this brochure.

